

Roadmap for the INFORM Subnational Risk Model

for the SADC region championed by the SADC-DRR Unit and the NDMA of Eswatini

GUIDING PRINCIPLE: RISK-INFORMED DEVELOPMENT

Achievements in terms of poverty reduction, combating illnesses and improving access to health care, education and services are fragile and are being undermined by new and emerging threats. Insufficient capacities and resources to understand and manage systemic risks is jeopardising the achievement of the 2030 Agenda and the Sendai Framework for Disaster Risk Reduction (2015-2030). **Disasters wipe out many years of development achievements and reduce the development opportunities of countries.** The debate around risk-informed development (RID) is becoming increasingly relevant at international, national, and subnational level. It refers to an understanding of development that takes account of **a wide range of interdependent, dynamic, cross-border and, in some cases, simultaneous risks.**

Together with the SADC Disaster Risk Reduction (DRR) Unit and UNDP's Resilience Hub for Africa, the GIZ project Global Initiative on Disaster Risk Management (GIDRM) strengthens risk governance processes in Southern Africa by **prioritizing the consideration of risks in all development policy, planning and decision-making across sectors.**

The gap in a standardised approach to risk mapping at regional levels results in challenges for national and regional decisions on response, preparedness, and resilience, as well overall for sustainable development. In the spirit of supporting decisions about prevention, preparedness and response, the INFORM Risk model provides a visually compelling regional, standardized and comparative risk assessment base map, which is open-source and provides a milestone for securing developmental gains in the SADC region.

INFORM RISK MODEL: A MILESTONE TOWARDS RISK-INFORMED DEVELOPMENT

The "Programme of Action (PoA) for the implementation of the Sendai Framework for DRR 2015-2030 in Africa" echoes SADC's Regional Indicative Development Plan on enhancing early warning systems for regional integration. As part of GIDRM's cooperation with the SADC DRR Unit, the development

The INFORM subnational risk index shows a detailed picture of risk and its dimensions – hazard and exposure, vulnerability, and coping capacity – that is comparable across a single region and/or country. The development process for an INFORM subnational risk model is a consultative process which determines the specific components of risk relevant to the local context and practical needs as well as identify available and relevant data. The model can help to identify at-risk areas and determine the major driving factors of risk, which can support decision-makers on how to manage and develop on a risk-informed path. It is valuable input for planning and/or resource allocation processes. Results are open and particularly useful in supporting any decision-making process that involves a wide range or large number of actors and sectors. ([DRMKC, 2022](#))

of the roadmap for an INFORM Risk model at provincial and municipal resolution for the region is envisioned. It will be developed by GIDRM through the cooperation with UNDP's Resilience Hub for Africa, UNDP's Country Office in Eswatini and championed by the SADC-DRR Unit and Eswatini's National Disaster Management Agency (NDMA). Simultaneously, the national priorities of Eswatini on urgent and critical gaps regarding risk knowledge and risk mapping will be considered.

The process involves taking the conceptual framework used to measure risk from the global INFORM model, adapting it to the local context and identifying existing subnational level data. The local lead organisations and partners are responsible for managing the development process and ultimately for owning, maintaining, and using the model.

The global INFORM initiative provides guidance, technical support, and tools, especially during the development phase. During the preparation phase, the local lead works with partners to assess feasibility, build support and identify resources for the development of the model. The development phase consists of identifying the most important risks to include in the model, and the data available for measuring them through a workshop, follow-up research and finally the use phase where the local lead and partners ensure that the model is used, maintained, and refined as needed.

THE REGIONAL BENEFIT OF THE INFORM RISK MODEL

The project will build Eswatini’s NDMA’s and partners’ capacity to develop, update and use risk maps and spearhead the development of a roadmap for the SADC region. Through country-level engagement, the INFORM process will simultaneously contribute to furthering the capacity of national and regional structures (i.e. the SADC Humanitarian and Emergency Operations Centre (SHOC)). Developing a roadmap for a Subnational INFORM Risk model for the region will contribute to SADC’s vision on development and regional integration as well as to AU’s Agenda 2063: The Africa We Want.

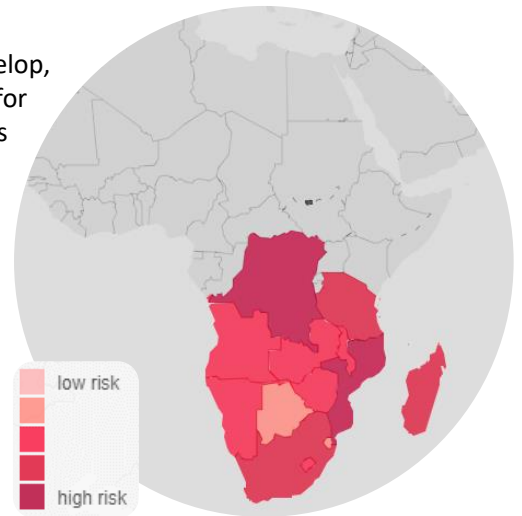


Figure 1: INFORM Risk in the SADC - National level
(Source: *DRMKC, 2022*)

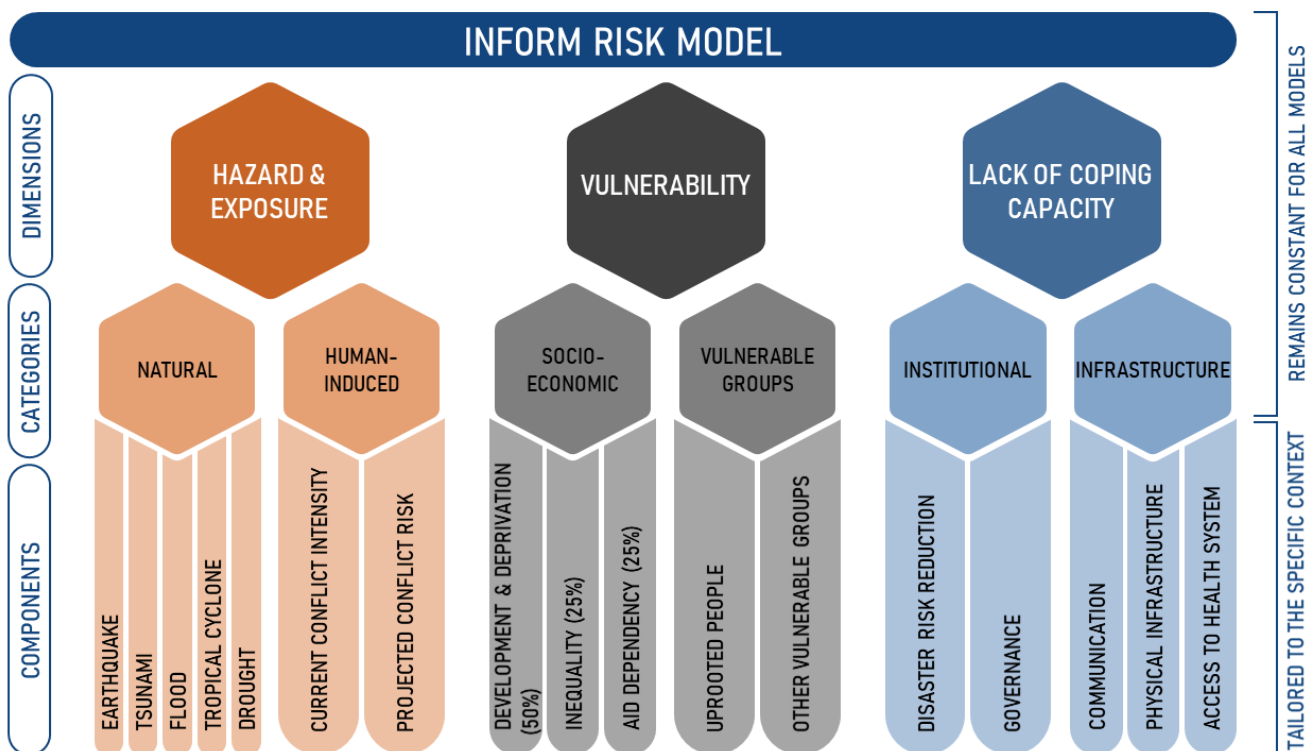


Figure 1: INFORM Risks Dimensions, Categories and Components

Published by
Deutsche Gesellschaft für Internationale Zusammenarbeit (GIZ) GmbH
Registered offices: Bonn and Eschborn, Germany

Global Initiative on Disaster Risk Management
Friedrich-Ebert-Allee 32 + 36
53113 Bonn, Germany
info@gidrm.net | www.gidrm.net | www.giz.de

Contact
Jacqueline Begerow | jacqueline.begerow@giz.de | +49 228 4460 1141

On behalf of
Federal Ministry for Economic Cooperation and Development (BMZ)
Division 503— Peace and Security, Disaster Risk Management

BMZ Berlin
Stresemannstraße 94
10963 Berlin, Germany
+49 (0)30 18 535-0 | poststelle@bmz.bund.de | www.bmz.de